

V.E.M.I.S.A.
 C/Fernández Caro, 44, 28027, Madrid
 Tel.: 914077497 – Fax: 914074849
<http://www.vemisa.net>





INDEX

- 1.- *The route editor.*
- 2.- *Getting started.*
- 3.- *Resources screen.*
 - 3.1.- *Audio menu.*
 - 3.2.- *Text message menu.*
 - 3.3.- *Waypoint menu.*
 - 3.4.- *Stations menu.*
- 4.- *Routes screen.*
 - 4.1.- *Route menu.*
- 5.- *Exporting the routes.*



1.- THE ROUTE EDITOR.

VEMISA Route Editor is designed to load routes data base in the VEMISA Passenger Information System. The idea is to work easily out of the train cabin, and with an USB Flash Disk update just with one touch the data base existing in the computer of the cabin.

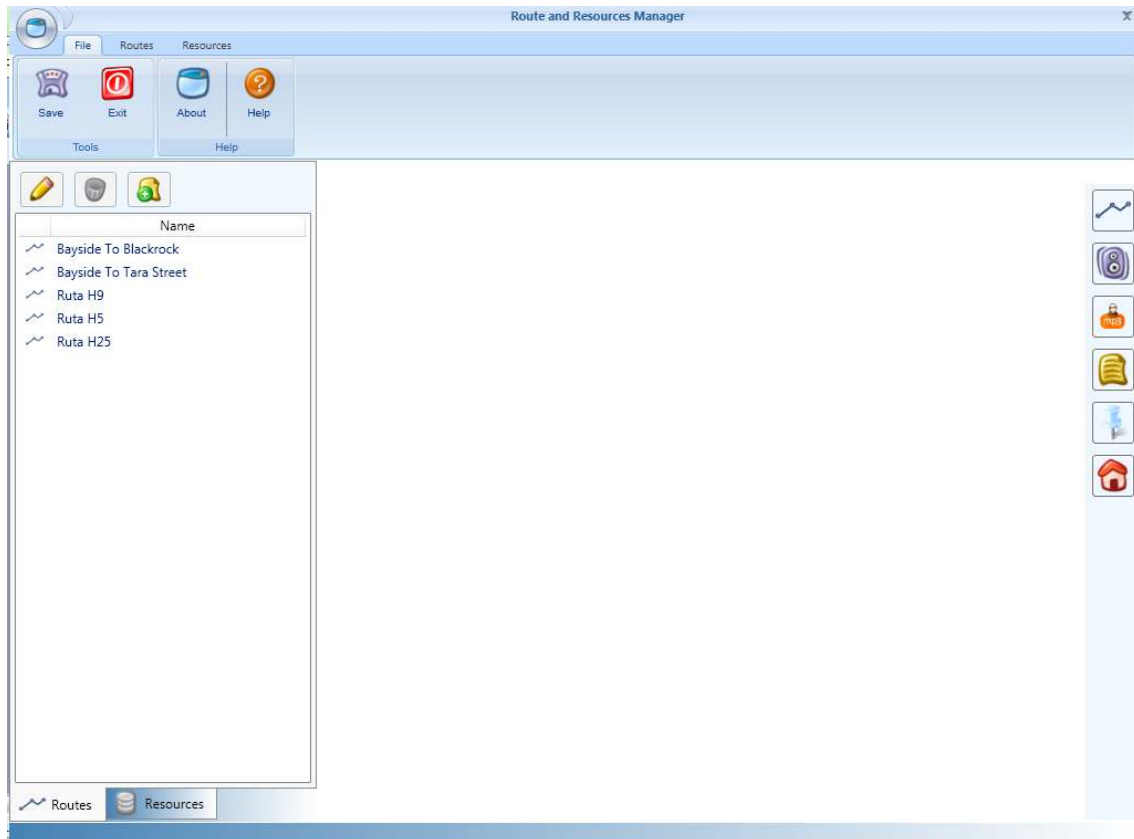
In this editor we will create stations, audio messages, text messages, GPS and tachometer positions, events and MP3 playlists for the background music. With all resources complete, we can generate the routes, and the system will export them to a USB Flash Disk in an specific format, to be read by the VEMISA PIS. The only requirement is to have .NET Framework installed, included in Windows Systems.

2.- GETTING STARTED.

When we execute the route editor, we will see the following screen:



Please wait until the interface is loaded. It depends on the speed of your computer. The screen you will see to start working on routes is the following:



In the first tab we can see “FILE”. Here we can save the work and exit the program.

The second tab is “ROUTES”. Here we can add and edit routes.

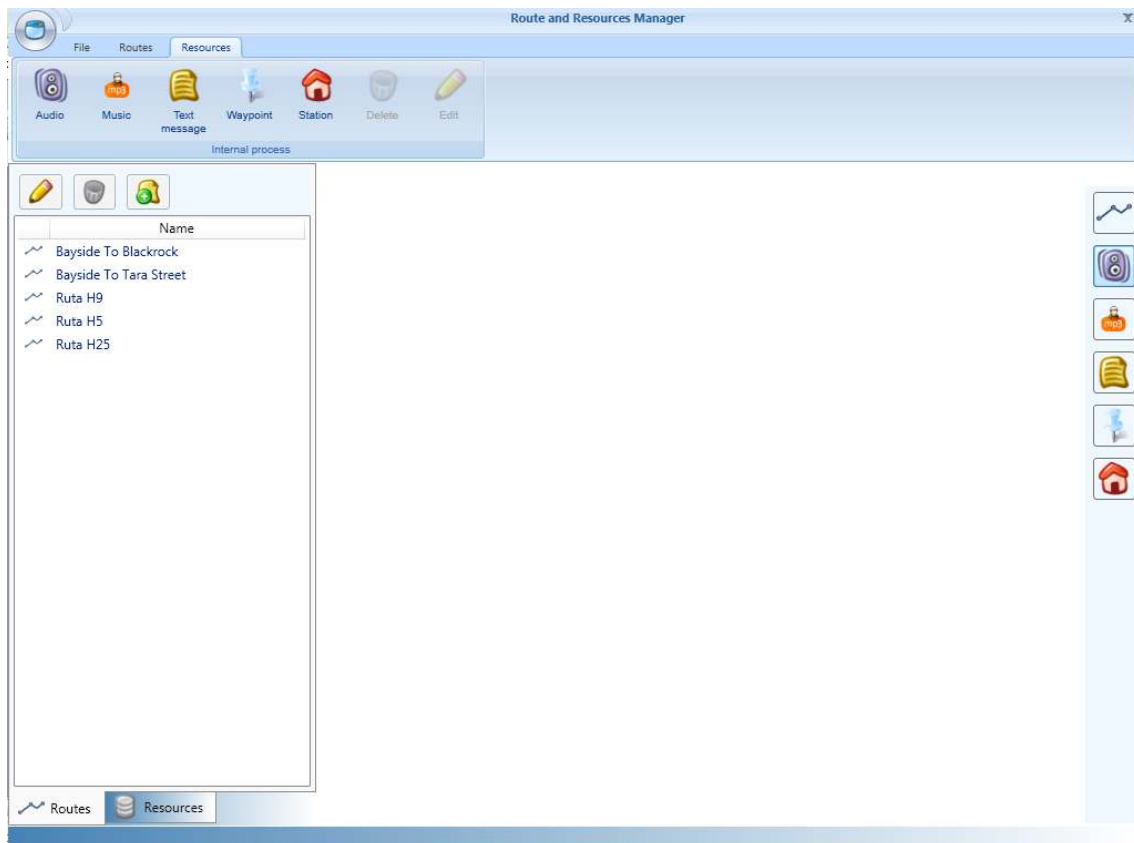
The third tab is “RESOURCES”. Here is where we define stations, audio and text messages, special messages and events.

At the right and bottom side there are shortcuts to all options we are going to study along the manual.



3.- RESOURCES SCREEN.

The first screen we will find if we press on the tab “RESOURCES” will look like this:



Now we are going to describe all icons and buttons:



→ Here we can create the audio resources in English and Irish: stations and messages.



→ Here we define the background music playlists.



→ Here we define the special messages text in the two languages.



→ Here we can define special events different from “this train is for”, “this is the last station” and “next station”. It is created to define special messages like “mind the gap” or transfers.



→ Here we can define the station with its texts, and add the audio resource and GPS position.

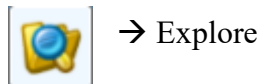
3.1.- Audio menu.

This screen will appear when selecting “Audio”:

A screenshot of a software interface titled "Audio". The window has a blue header bar with the title "Audio" and a close button (X). On the left side, there is a sidebar with a speaker icon and the word "Audio". The main area contains three input fields: "Name", "English Audio", and "Irish Audio". Each field has a corresponding icon to its right: a speaker icon for "English Audio" and a speaker icon for "Irish Audio". At the bottom right of the window, there are two buttons: "Accept" with a green checkmark icon and "Close" with a red X icon.



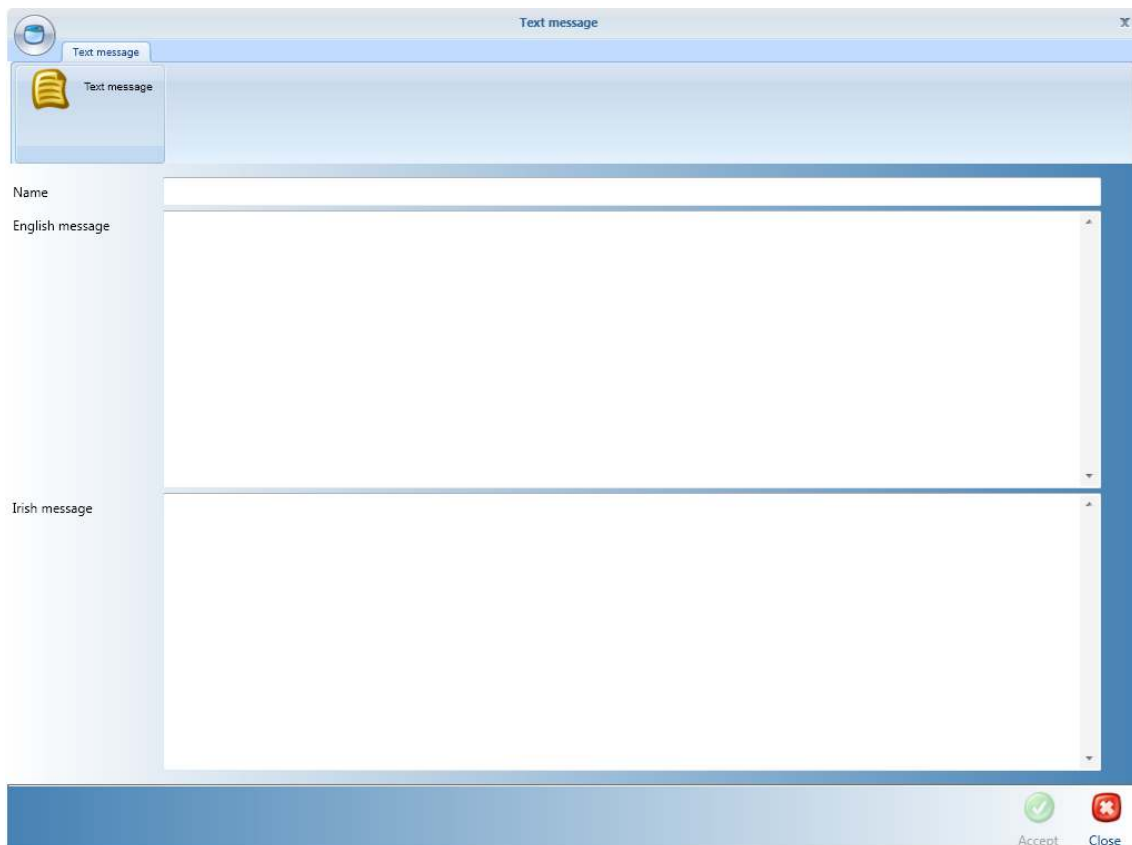
It is just needed to write a name for the station, and select in the browser (“EXPLORE”) where is the audio file in English, and the audio file in Irish. Only wav files are accepted. If one of the languages is not completed, there will be no emission in that language.



When finished, press Accept to record, or Close to cancel.

3.2.- Text message menu.

You will see this screen:

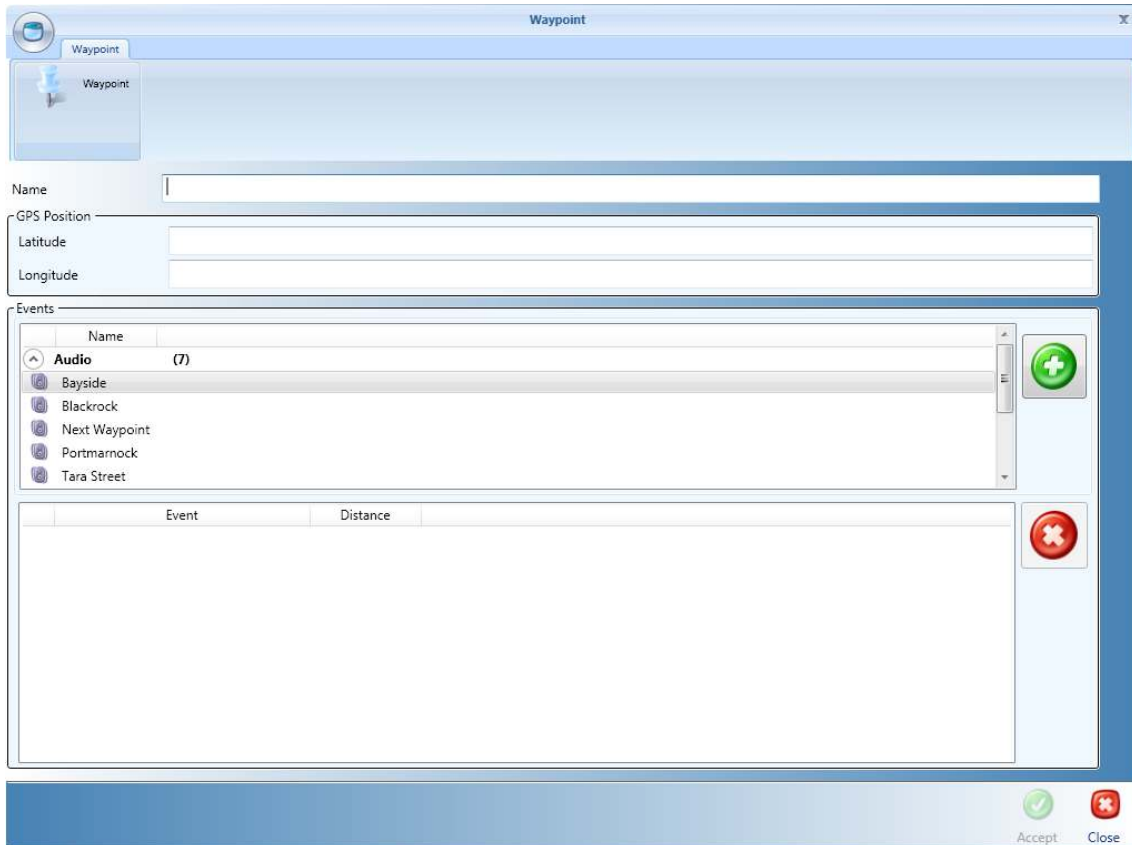


This is only for text messages in inside screens. Here the only thing needed is to write a name for the message we want to create, and write it in English and in Irish. If one of the languages is not created, no emission in that language.



3.3.- Waypoint menu.

When we select the waypoint menu, the screen displayed will be the following:

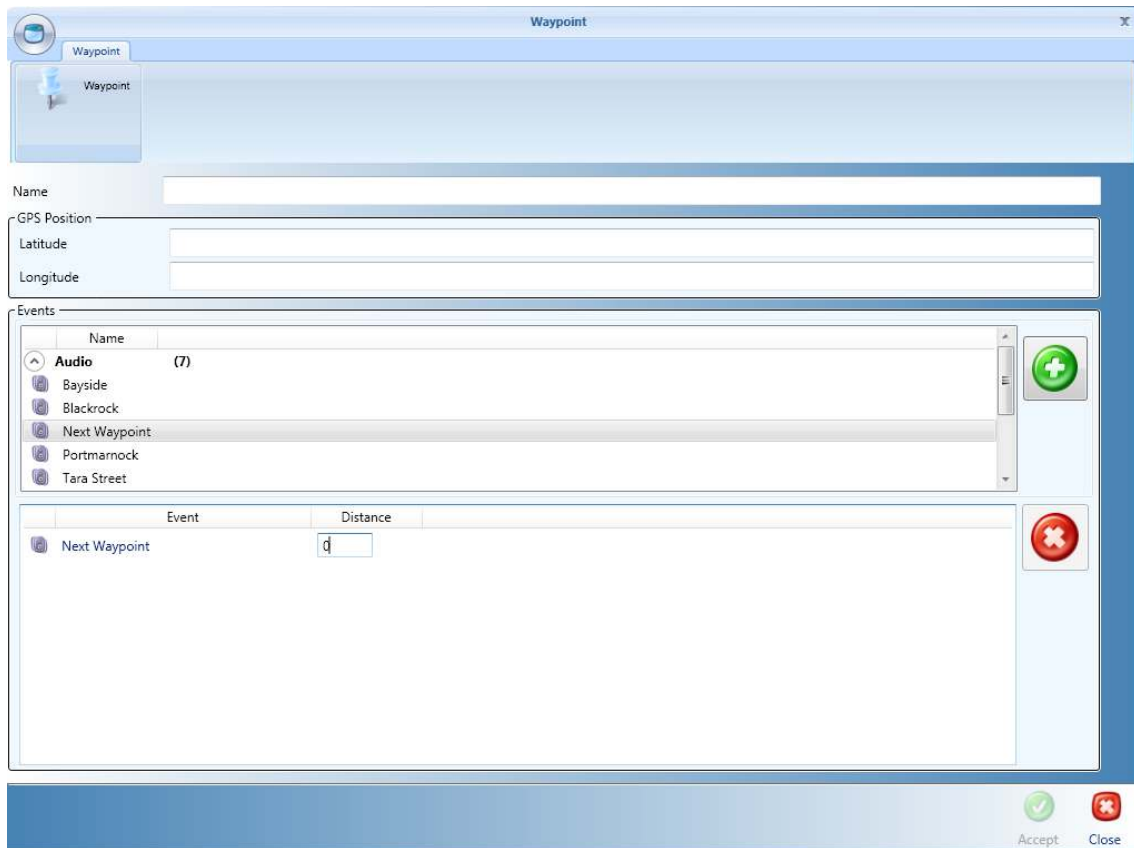


Here we can add special messages, like transfers, “mind the gap”, “do not step on the seats”... with the available text and audio messages already created in the last two menus. Just give a name, a GPS position (if available) and add the resource with the “ADD” Button.



→ Add button.

You can also add a distance data:



Press Accept to record, or Close to cancel.

3.4.- Stations menu.

This menu is where we create the stations, with text and audio resources, and special events.



In General Information:

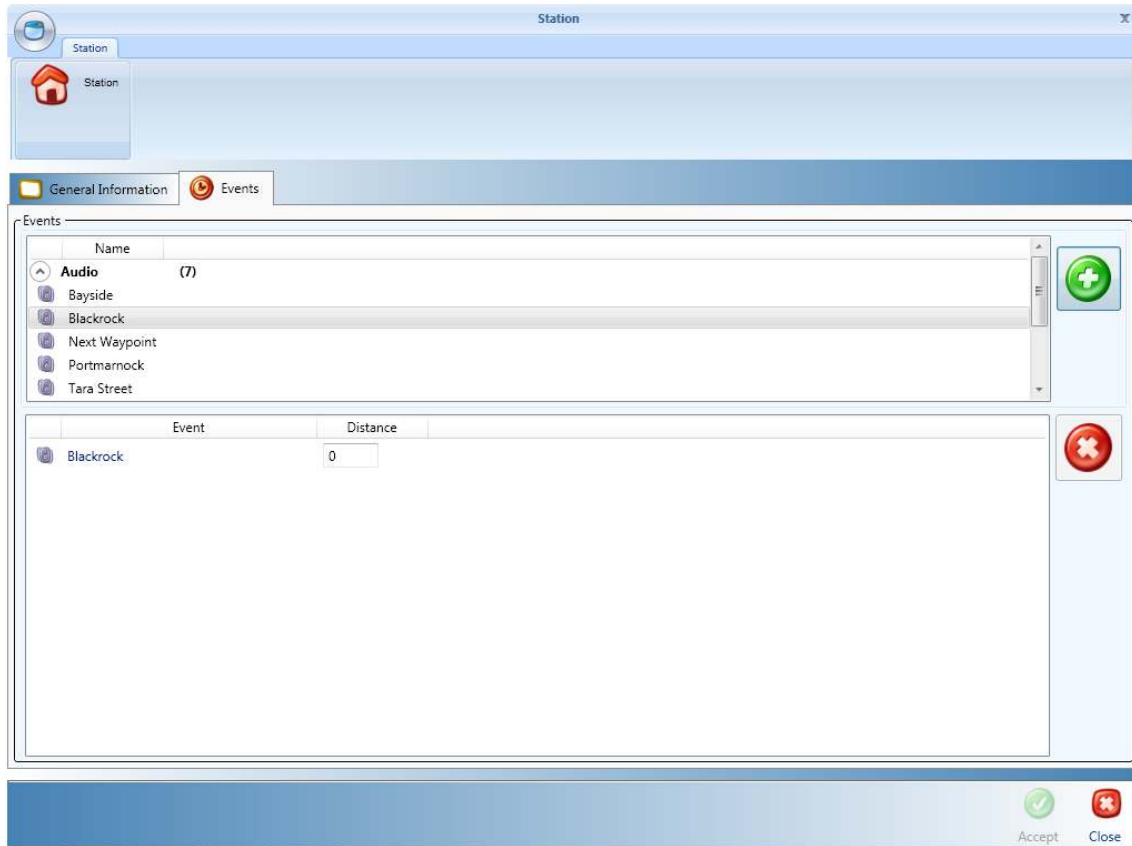
A screenshot of a software interface titled "Station". The interface has a blue header and a sidebar on the left with a home icon and the word "Station". The main area contains two tabs: "General Information" (selected) and "Events". Under "General Information", there are several input fields: "English name", "Irish name", "Audio resource" (a dropdown menu), "GPS Position" (containing "Latitude" and "Longitude" fields), and "Abbreviations". The "Abbreviations" section has a table with a "Name" column and a "Value" column. To the right of the table are two buttons: a green plus sign and a red minus sign. At the bottom right of the window are "Accept" and "Close" buttons.

- 1.- Write the English name.
- 2.- Write the Irish name.
- 3.- Select the audio resource already created.
- 4.- Write the GPS position.
- 5.- Abbreviation: If the name is too long to be written in the frontal and side destination screens (8200s and 8510s), write an abbreviation for the station (v.g.: *Howth Junction* → *Howth Jct.*)

Press Accept to record or Close to cancel.



In Events menu:



Add an event from the audio and text resources and write the Distance position. This is for special events different from the normal operation of the train, which are the following, and automatically programmed in the PIS:

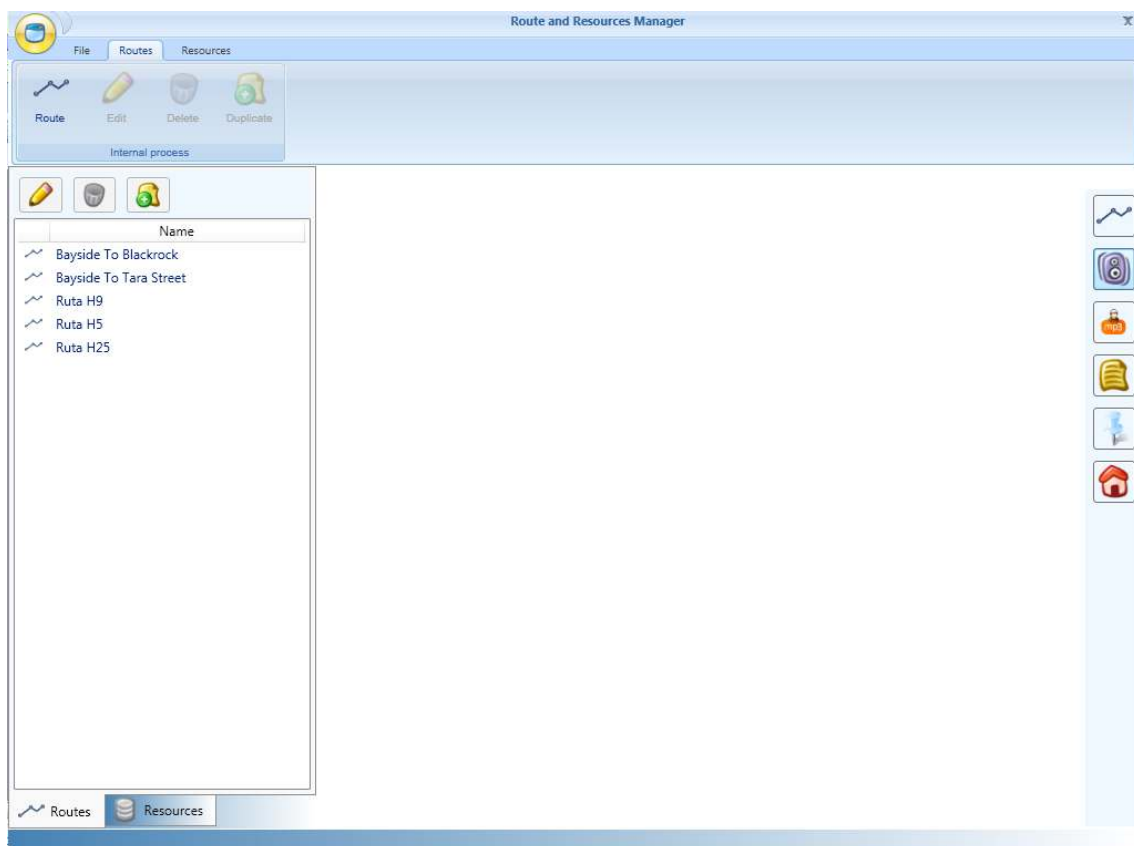
- This train is for messages.
- Last stop messages.
- Next station messages.

Press Accept to record and Close to cancel.



4.- ROUTES SCREEN.

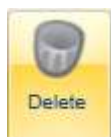
Finally, in this screen we can program the routes with all resources previously created:



→ To start creating the route.



→ To edit an existing route.



→ To delete an existing route.



→ To duplicate an existing route.

4.1.- Route menu.

When pressing in the ROUTE menu, to start creating the routes, we see “general information”:

A screenshot of a software window titled "Route". The window has a blue header bar with a "Route" menu icon. Below the header, there are three tabs: "General Information" (selected), "Stations", and "Events". The "General Information" tab contains a form with the following fields:

Name	<input type="text"/>
Start date	01/01/0001 00:00
End date	31/12/9999 23:59
Comment	<input type="text"/>

At the bottom right of the window, there are two buttons: "Accept" (with a green checkmark icon) and "Close" (with a red X icon).

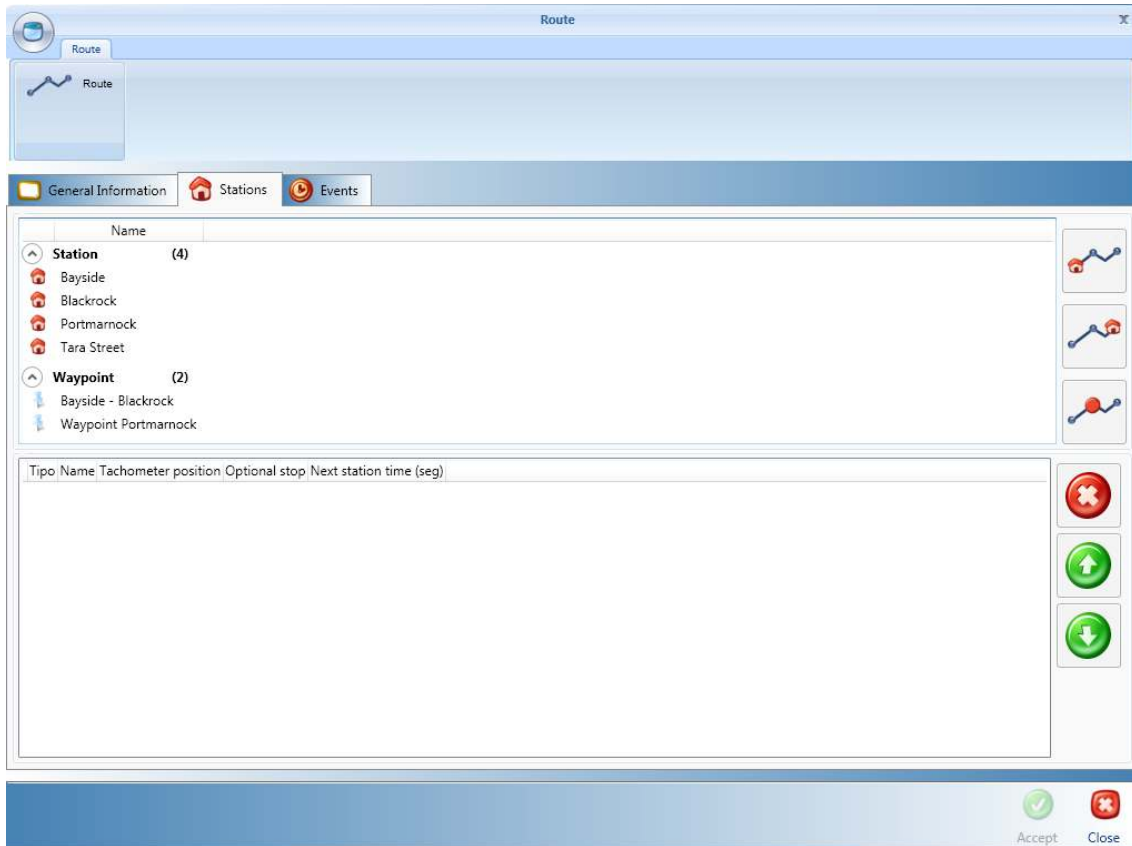
1.- Write a name to locate the route in the file list.

2.- Select a starting date.

3.- Select a finishing date.



The “stations” tab:



→ Creates an origin station.



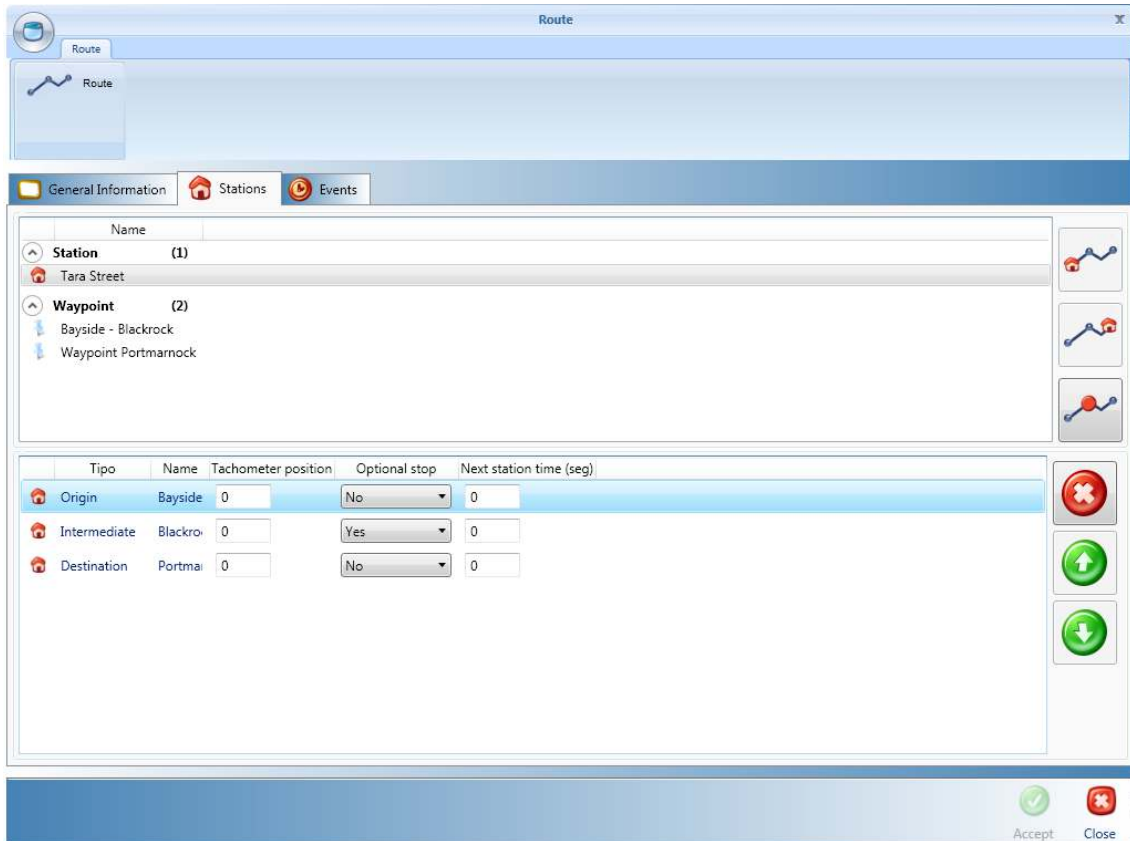
→ Creates a final stop.



→ Creates an intermediate stop.



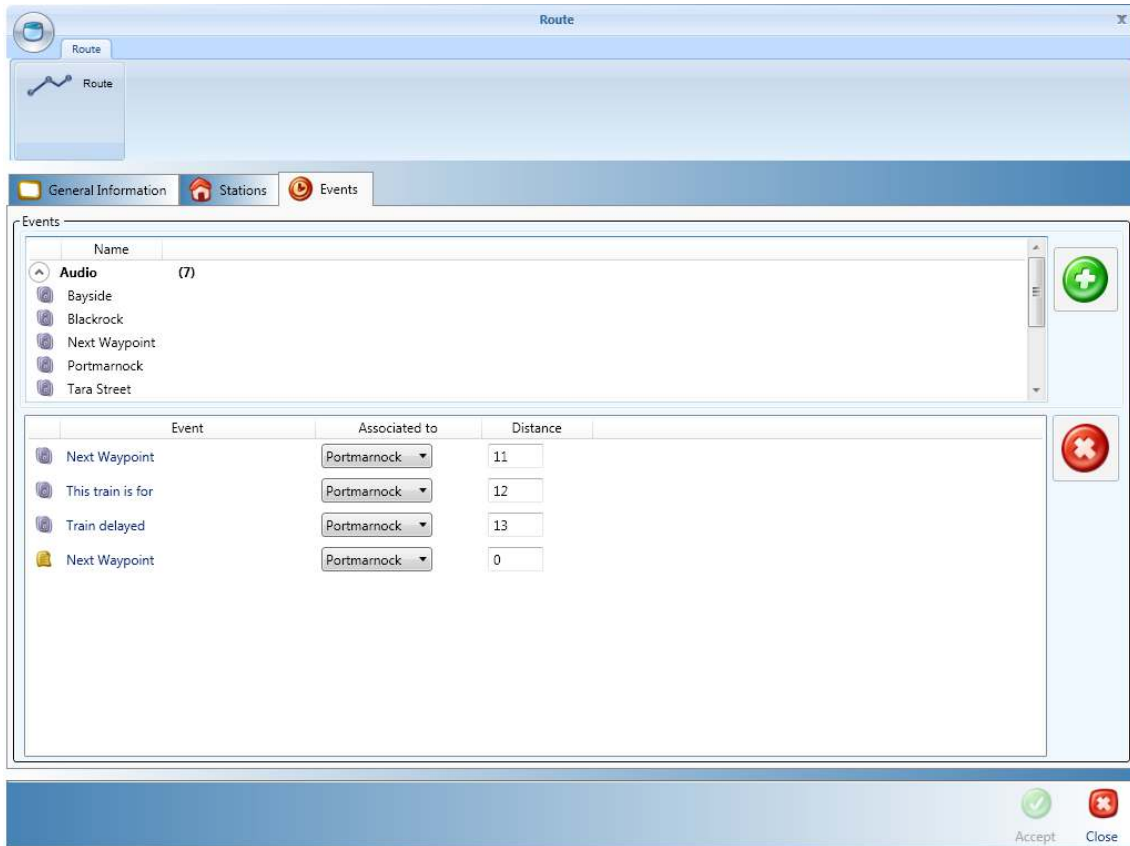
When the route is created:



You can select if the station is an optional stop, and you have to enter:

- Absolute tachometer position, referred to the origin station.
- Estimated time for the next station, if known.

And we can also program Events, for special messages different from the normal train announcements:

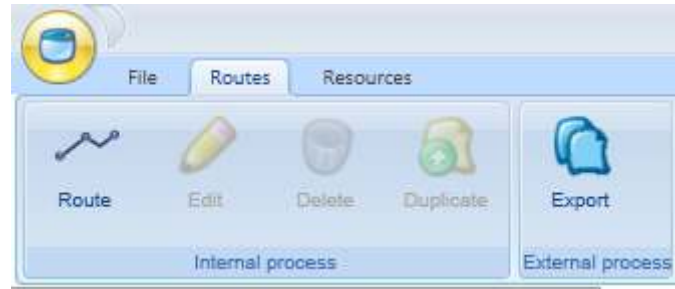


- 1.- Select the desired resource.
 - 2.- Enter the distance to gain the event.
- Press Accept to record or Close to cancel.

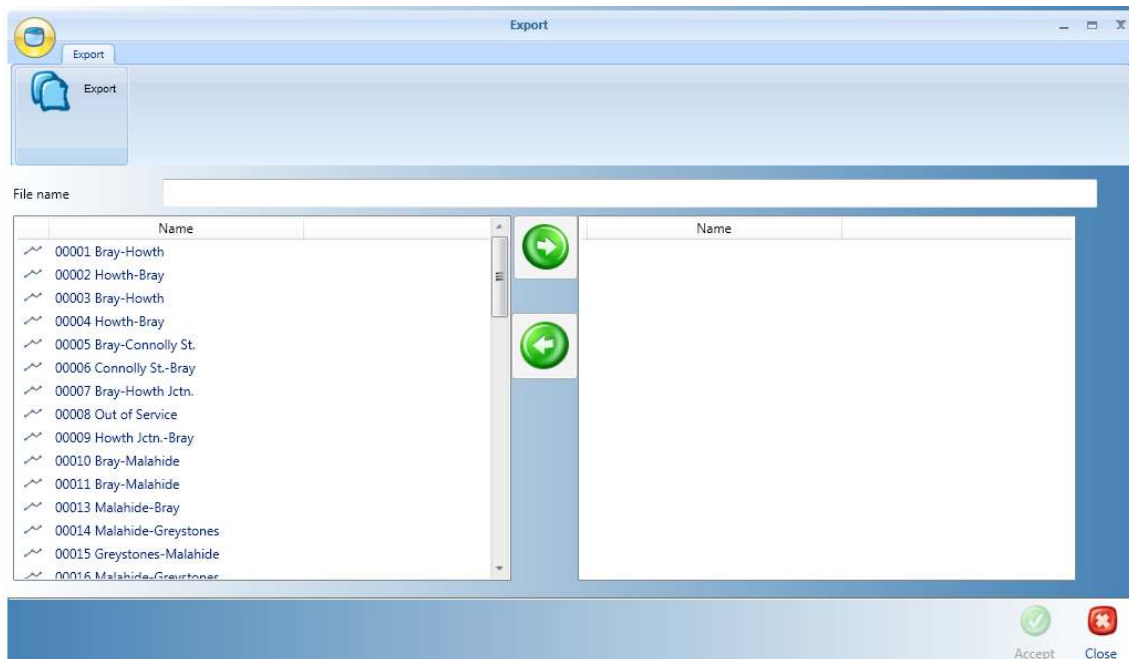


5.- EXPORTING THE ROUTES.

Once the routes are created, in the route menu, select “export”:



Once pressed “export” button, you will see:

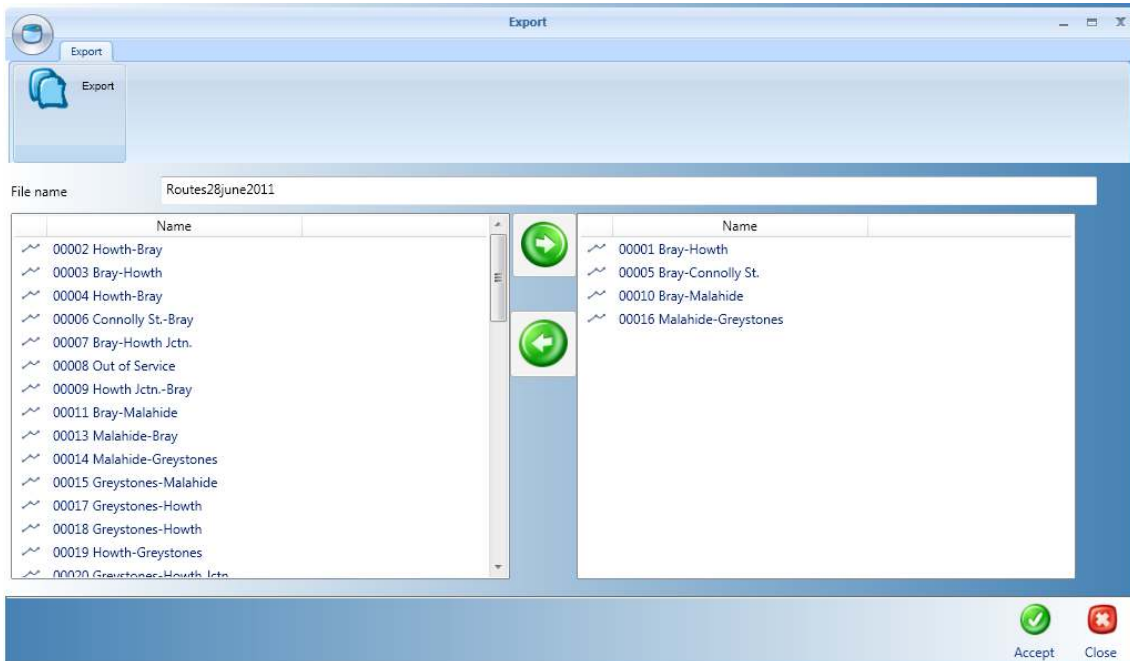




1.- Write a file name. A file with extension .cfs will be created in the editor folder, inside a new folder named “export”.





2.- Select the routes you want to export:



Add or remove them with the  and  buttons. Once finished press “accept”.

The file will be created in the mentioned folder.

To download this file into the PIS, copy the file into the root of a USB drive.

Instructions to update routes in the PIS are in the PIS manual.